



## NADAL<sup>®</sup> COVID-19 IgG/IgM Rapid Test

Rapid test for the detection of anti-SARS-CoV-2 IgG and IgM in human whole blood, serum or plasma samples

### About the virus

The name 'coronavirus' is derived from the characteristic crown-shaped appearance of the surface proteins (so-called spikes) of its envelope (Lat. *corona*: crown). The family *Coronaviridae* (CoV) includes 2 subfamilies, 5 genera, 23 subgenera and approximately 40 known species. Many of these viruses cause disease in mammals and birds and can be transmitted from animals to humans. Human coronaviruses (hCoVs) were first described in 1965. The known human pathogenic representatives are primarily members of the *Betacoronavirus* genus and cause illnesses ranging from the common cold to severe acute respiratory infection (SARI), bronchitis or pneumonia.

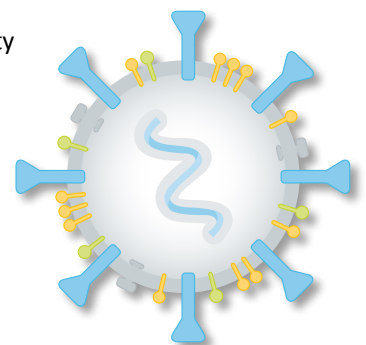
In late December 2019, a novel human pathogenic betacoronavirus first appeared in Wuhan (China). The current coronavirus, provisionally known as 2019-nCoV and officially designated as SARS-CoV-2, is the third human pathogenic coronavirus in the last two decades, and the seventh known overall. It follows severe acute respiratory syndrome (SARS-CoV) in 2002 and Middle East respiratory syndrome (MERS-CoV) in 2012. The clinical manifestation of the current SARS-CoV-2 is officially designated as COVID-19.

### NADAL<sup>®</sup> COVID-19 IgG/IgM Rapid Test

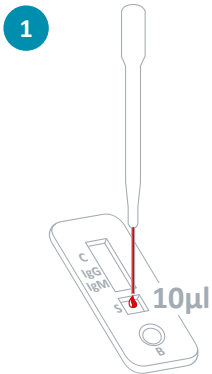
The NADAL<sup>®</sup> COVID-19 IgG/IgM Test is a chromatographic lateral flow immunoassay for the qualitative detection of anti-SARS-CoV-2 IgG and IgM in human whole blood, serum or plasma samples. It is important to note that in the early stages of the infection (3 to 7 days), anti-SARS-CoV-2 IgG and IgM may be below the detection limit of the test. The test is intended as an aid in the diagnosis of primary infections and possible secondary infections with SARS-CoV-2. The test procedure is not automated and requires no special training or qualification.

### Your benefits at a glance:

- ✓ High sensitivity and specificity
- ✓ Easy to use
- ✓ Fast and reliable results in just 10-20 minutes
- ✓ Testing can be performed with whole blood, serum or plasma
- ✓ Test can be stored at room temperature



## Test Procedure



Holding the pipette vertically, collect the sample (whole blood/serum/plasma) up to the first widening (approx. 10 µL) and dispense it into the sample well (S) of the test cassette.



Holding the buffer bottle vertically, dispense 2 drops (approx. 80 µL) of buffer into the buffer well (B) of the test cassette. **Avoid the formation of air bubbles.**



Wait until the coloured line(s) appear(s). Read the results after 10 minutes. Do not wait more than 20 minutes before reading the results.

[A detailed description can be found in the package insert.](#)

## Result Interpretation



## NADAL® COVID-19 IgG/IgM Test

Rapid test for the detection of anti-SARS-CoV-2 IgG and IgM in human whole blood, serum or plasma samples

| Product                      | Sample material              | Sensitivity                  | Specificity                  | Product code | Pack size         |
|------------------------------|------------------------------|------------------------------|------------------------------|--------------|-------------------|
| NADAL® COVID-19 IgG/IgM Test | Whole blood, serum or plasma | 86.8 % (IgM)<br>97.4 % (IgG) | 98.6 % (IgM)<br>99.3 % (IgG) | 243001N-10   | 10 tests per pack |

Rev01.01/XX0705en00069  
Rev01.01/0705en00066

Our **customer service team** is on hand to answer any questions you may have by telephone, via email or in a personal consultation. For details on **your local sales office and regional free phone numbers**, visit [www.nal-vonminden.com](http://www.nal-vonminden.com).

We help you care!

We help you care!

Rapid Tests

Laboratory Diagnostics

Laboratory Service

Consulting & Service